



*HARTFORD HUNDRED WEST*  
*Bayford, Brickendon, Essendon,*  
*Little Berkhamsted & Ponsbourne.*



THE  
**PARISH**  
**MAGAZINE**

**August**  
**2022**

**Price**  
**60p**



**Chiffchaff (top) Willow Warbler (bottom)**

**Images: RSPB**

## DIOCESE OF ST. ALBANS



**The Bishop of St Albans:** The Rt. Revd. Dr. Alan Smith  
**The Bishop of Hertford:** The Rt Revd Dr Michael Beasley  
**Archdeacon:** The Venerable Janet Mackenzie .  
**Rural Dean:** The Revd. Mark Dunstan  
**Assistant Rural Dean:**

### THE PARISHES OF BAYFORD & BRICKENDON, LITTLE BERKHAMSTED, ESSENDON & WOODHILL, PONSBOURNE:

**RECTOR: Rev'd Theresa Musiwacho,**

Hartford Hundred Rectory,  
1 Little Berkhamsted Lane, Little Berkhamsted, SG13 8LU.  
Telephone: 01707 875940 email - hartfordhundred@outlook.com

*Communion to the sick, Notice of Banns and of Marriage by arrangement with the Minister.  
Please advise us of any cases of sickness so that prayers may be offered  
or where they may be of any assistance.*

#### **ST ANDREW'S - LITTLE BERKHAMSTED**

##### **CHURCHWARDEN**

Sandie Ash, Hall Cottage, 7 Church Road,  
Little Berkhamsted, SG13 8LY **01707 875221**

##### **PCC SECRETARY**

Ian Bailey, Tower House, Stockings Lane,  
Little Berkhamsted. SG13 8LW **01707 875791**

##### **TREASURER**

Mr C Nunn, Trewinnard House, Little  
Berkhamsted, SG13 8LS **01707 874299**

##### **ORGANIST**

#### **ST MARY - BAYFORD and HOLY CROSS & ST ALBAN - BRICKENDON**

##### **CHURCHWARDEN**

Mr C Taylor, Baybury House, 41 Ashdene  
Road, Bayford, Hertford, SG13 8PX  
**01992 511041**

##### **PCC SECRETARY**

##### **TREASURER**

Mrs. L. Fitzjohn, Home Farm, Bayford  
Lane, Bayford

##### **ORGANIST**

Mrs V Haryott, Wellpond Cottage, Brickendon,  
SG13 8NU **01992 511575**

#### **ST MARY THE VIRGIN - ESSENDON & WOODHILL. AL9 6AS**

##### **CHURCHWARDENS**

Paul Wombwell, 27 Rectory Close, Essendon,  
AL9 6HG **01707 273729**  
Colin Rees, 2, Letty Green, Hertford,  
SG14 2NZ. **07540 351 530.**  
colin4444@yahoo.com.

##### **PCC SECRETARY**

Ms C Blackman, 42 High Road, Essendon,  
AL9 6HW 07831 341886  
casblackman@yahoo.com

##### **TREASURER**

Mr Nick Pickard, Cucumber Hall, Essendon,  
AL9 6JB 07779 325847

#### **ST MARY - PONSBOURNE**

##### **CHURCHWARDEN**

##### **PCC SECRETARY**

##### **TREASURER**

##### **ORGANIST**

Mr P Minchinton, 14 Byfield, Welwyn Garden  
City, AL8 7AL **01707 323742**

##### **PARISH MAGAZINE EDITOR**

Dr M E Wainwright. 12 Church Road, Little  
Berkhamsted, SG13 8LY. **01707 875970**  
parishmag@begeford.co.uk

**The Parish Magazine is also available online, free of charge.  
Google 'HHW Parish Magazine'.  
We in the first few hits.**

Dear All

**Mark 16:1-4**

*When the Sabbath was over, Mary Magdalene and Mary the mother of James and Salome bought spices, so that they might go and anoint Jesus. And very early on the first day of the week, when the sun had risen, they went to the tomb. They had been saying to one another, Who will roll away the stone for us from the entrance to the tomb? When they looked up, they saw that the stone, which was very large, had already been rolled back.*

The two women, made their way to the tomb to embalm the body of Jesus with spices. They took a step of faith, which leaps over mountains, because ahead of them on the tomb was a very large stone. Physically, they did not have the strength to push or roll the stone away. In fear of the Romans, they could not ask for help in the community as the death of Jesus had caused an uproar, commotion, division and unexplainable moments amongst the people and the Church. Remember, when Jesus gave up his spirit (an act of His will) on the cross there were three hours of shrouded darkness across the land. (He was bearing the full judgement of our sins). The curtain in the temple was torn from the top to the bottom (an indication of access of all believers into the sanctuary of God), Mk16:33, 38. Woo! Jesus, this was not an ordinary death.

I am impressed by the women's leap of faith despite the obstacles ahead. The fact that they were two is significant, they encouraged each other. Their trust in God gave them strength. The

large stone meant that there was no entrance to the tomb. Further to that barrier there was a Roman seal and the guard of soldiers. They did not focus on the barriers but on the omnipotent God. Sometimes there are huge stones or mountains of difficulties in our lives. There are times when we cannot foresee the way out to what we are asking God for. On the way, the two women even discussed the issue of the very large stone. They acknowledged the problem but continued walking forward in faith.

Sometimes we even give up before attempting. There are times when we give up because we cannot find help or no one seems to understand what we are going through. Be encouraged today, do not give up. On arrival, the women looked up, the stone had been rolled away. They entered the tomb and guess what? A great encounter...

The process of rolling the stone away from the mouth of the tomb was not explained to us by Mark. What we know is that the stone was rolled away by the time the women got to the tomb. When we offer our prayer requests to God, we trust Him to respond. Sometimes we wonder how He is going to do it because in our eyes or understanding it is impossible but today, we are encouraged to leave the 'How Part' to God.

*"When they looked up, they saw that the stone, which was very large, had already been rolled back".MK 16:4*

Revd Theresa Musiwacho

## Prayer Share

Merciful God, you have prepared for those who love you such good things as pass our understanding: pour into our hearts such love toward you that we, loving you in all things and above all things, may obtain your promises, which exceed all that we can desire; through Jesus Christ your Son our Lord, who is alive and reigns with you, in the unity of the Holy Spirit one God, now and for ever. Amen



## The Parish Magazine—Online

As part of the ongoing development of the Parish Magazine, we are now trialling during 2022 the option for subscribers and advertisers alike to be able to access the latest monthly offering both in hard copy and on-line.

Access to this month's and subsequent months' magazines, can be gained by typing '**HHW Parish Magazine**' in to **Google**. We are the one of the first hits.

We hope that our current hard copy subscribers will take the opportunity to access the on-line version on occasions during the year, to assist them in making a conscious decision on their preferred format, going forward into 2023.

Please do not hesitate to contact me with any feedback or suggestions.

MW

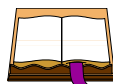
## Weddings, Baptisms and other matters

**Saturday Registration** is held on the 1<sup>st</sup> and 3<sup>rd</sup> Saturdays of each month 10.00 am to 11.30 am at Little Berkhamsted Church.

If you, or someone you know, is interested in a wedding or baptism, or just have a question for our Rector, we will be happy to see you.

All are welcome. You do not need an appointment, just turn up.

## PARISH REGISTER



### Death

10<sup>th</sup> June 2022

Jill Shelson MARQUES  
Aged 90 years

Little Berkhamsted

### Interment of ashes

3<sup>rd</sup> July 2022

Violet May SLOUGH  
R.I.P 6<sup>th</sup> December 2021 Aged 89

Little Berkhamsted

### Baptisms

19<sup>th</sup> June 2022

Riva Rae ASHLEY  
D.O.B 4<sup>th</sup> October 2021

Bayford

26<sup>th</sup> June 2022

Lola Roberta FRANKLIN  
D.O.B 26<sup>th</sup> June 2021

Ponsbourne

# AUGUST CALENDAR

## Sunday 7<sup>th</sup> August

9:30am, Parish Communion, Essendon  
9:30am, Family Service, Ponsbourne  
11:00am, Parish Communion, Brickendon

## Sunday 14<sup>th</sup> August

9:30am, Parish Communion, Bayford  
11:00am, Family Service, Little Berkhamsted

## Sunday 21<sup>st</sup> August

9:30am, Family Service, Essendon  
9:30am, Parish Communion, Ponsbourne  
11:00am, Family Service, Brickendon

## Sunday 28<sup>th</sup> August

9:30am, Parish Communion, Little Berkhamsted  
11:00am, Family Service, Bayford  
6:30pm, Evensong, Essendon

## **Wednesdays**

9:30 am, Parish Communion, Essendon  
10:00 am, Telephone Service Free

Joining instructions for both the Zoom and telephone services are available from [hartfordhundred@outlook.com](mailto:hartfordhundred@outlook.com)

## **Opportunity to join the Parish Magazine team**

As if by magic and as regular as clockwork, each month the magazine drops onto the doormats of 480 homes within the five parishes. This is primarily down to our dedicated team of distributors and sub-distributors, to whom we are all indebted. We now have the following voluntary opening for anyone who wishes to make a contribution in maintaining this quality of service:

### **Little Berkhamsted Sub-distributor – Robins Nest Hill & Bucks Alley:**

Liaising with the Little B Distributor for delivery or collection of 20 copies of the magazine each month and subsequent delivery to the subscribers' homes.

Should you be interested in playing a part in village life as we know it or wish to learn more about what is involved in the above role, please feel free to contact in the first instance either:

**Mike Wainwright, Editor: [parishmag@begesford.co.uk](mailto:parishmag@begesford.co.uk) or on 01707 875970**

OR

**Peter Chivers, Treasurer: [peterchivers53@gmail.com](mailto:peterchivers53@gmail.com) or on 01707 642622**

Only when this role has been filled will we be able to guarantee the quality of service that our readers have become used to and are entitled to receive in the foreseeable future.

# PILATES

Essendon Village Hall  
As well as live on Zoom  
Monday 7pm - All levels  
Thursday 9.30am - All levels



Please visit my website for more details

[www.fittawithpilates.com](http://www.fittawithpilates.com)

or contact Keti on

07718386195

[keti.snee@googlemail.com](mailto:keti.snee@googlemail.com)

one-2-one Pilates available in my reformer studio  
and  
Miha body-tech EMS  
(electro-muscle stimulation)



**Hair by Liz**  
07809446786

**Liz Wainwright**  
Over 20 years experience  
Fully insured

All equipment sterilised  
Full PPE worn

in the  
**COMFORT and SAFETY**  
of your own home.



Home Wood Tree Services Ltd

Cuffley, Hertfordshire

Clean, tidy, precise and fairly-priced tree surgery  
in Cuffley and the local surrounding areas.

**FREE WRITTEN QUOTATION – NO OBLIGATION**

Contact Michael or Barbara on

Mob: **0771 666 29 32**

Email: *homewoodtrees@yahoo.com*

Small and large jobs

Punctual, polite and courteous personnel

**Fully insured and NPTC qualified**

Cut-backs from property boundaries - Reductions in tree height  
Crown lifting, thinning and reduction - Hedges trimmed  
Pruning - Dead wooding - Removal of dangerous branches/limbs  
Tree and sectional felling – Pollarding  
Chipping and logging – Ecological green waste disposal  
***Find us on Google!***

# HARRISONS

EXECUTIVE CAR SERVICE

AIRPORT TRANSFERS, SPORTING EVENTS,  
WEDDINGS, CONCERTS, THEATRE,  
RESTAURANTS, CORPORATE / BUSINESS

FULLY LICENSED  
EXECUTIVE MERCEDES SALOONS  
1 - 4 PASSENGERS

07711 236198

GUY@HARRISONS-EXEC.COM

WWW.HARRISONS-EXEC.COM





CUCUMBER FIELDS

## Summer Holiday Young Yogi & Art Club

**July - August | Monday's and Thursday's**

Members and non-members welcome - sign up to a yoga or bike class, or relax in The Pantry while their child takes part.

**Kids Yoga ☉ Mindful Art Activities ☉ Outdoor Animal Fun  
Garden Yurt ☉ Refreshments**



Visit our website for dates and pricing, bookings can be made via Gail at [gail@cucumberfields.co.uk](mailto:gail@cucumberfields.co.uk)

[www.cucumberfields.co.uk](http://www.cucumberfields.co.uk) | 01707 244 118

ESSENDON | HERTFORDSHIRE



# Michael Anvoner & Company

SOLICITORS

We specialise in:

Wills

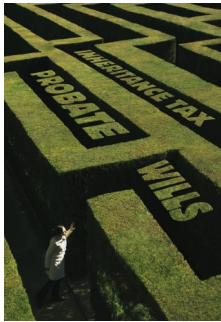
Probate & Administration of Estates

Inheritance Tax Planning

Lasting Powers of Attorney

Lifetime & Will Trusts

Care Fees & Later Life Planning



We'll guide you through the legal maze, protect your lasting legacy, and bring peace of mind to you and your loved ones.

For clear advice in plain English please contact us to arrange a meeting, either from home by Zoom Video Call, or in the Covid-friendly meeting room at our Barnet office, with one of our Specialist Solicitors.

**Tel: (020) 8449 0003** (Mon-Fri 9am-5.30pm)

Constable House, 5 Bulwer Road, Barnet EN5 5JD

Email [law@anvoner.co.uk](mailto:law@anvoner.co.uk) [www.anvoner.co.uk](http://www.anvoner.co.uk)

## Adventure for Dementia.

### Westward Ho!

I am sitting, with no shoes or socks on typing to you, from our sunny (ish) garden. It feels strange to not be strapping up my boots, hoisting my pack on my shoulders and walking! Yes, I am missing the path; I must be mad.

We did it! My husband and I completed the whole SW Coast path walk, 630 official miles in 8 weeks; walking for my mum, Margaret who has end stage Alzheimer's, raising funds for Alzheimer's Society and Alzheimer's Research UK along the way. You can share our journey and view photos of our stunningly beautiful SW coast on our blog at <https://paulasmadadventure.wixsite.com/swcoastpathwalkblog> . I posted an entry each day, so my dad could participate too. You can also find me on Instagram/Facebook search for paulas.mad.adventures

We were joined by friends and family along the way; especially poignant were sharing cream tea, to mum's recipe, at Budleigh Salterton á la my sister with our dad and walking the home strait, Studland Bay with our children! It was so lovely to have their company. This along with many well wishers, cheered our grumbling calves and



*Mum and Dad and Me.*



*Day 56.  
S. Haven Point.  
The End.*

aching shoulders on!

Yes, my amazing almost 83 year old dad walked us into the ground! After reading the blog, he persuaded my sister to drive him to join us; it made my weekend.

Visiting mum afterwards at St Christopher's care home, a lovely garden party was in full swing with music and dancing. Gosh this is a lovely welcome I thought!

Regaling mum with our adventure at the garden party, we were congratulated by local MP Grant Shapps on completing the SW Coast path walk for Alzheimer's Society and Alzheimer's Research UK. Thank you to all at St Christopher's for looking after her so well.

Thank you for reading my story , and a huge thank you for your support. Paula  
<https://www.justgiving.com/fundraising/adventure-4-alzheimerssociety>  
<https://www.justgiving.com/fundraising/Adventure-4-AlzheimersResearch>  
(Follow my progress on Facebook Instagram & Tiktok – as a social media novice this could be interesting!)

## Local Shops and Pubs (open for business)



**EMMIE MURPHY'S  
VILLAGE STORE**



**CHURCH ROAD, LITTLE BERKHAMSTED**

Locally Grown Fruit and Veg. when available. Braughing Sausages. Locally Made Apple Juices. Local Bread, Cakes and Fresh Cream Cakes. Fresh Flowers. Locally Made Jam, Marmalade and Honey. Local Farm Eggs and Duck Eggs delivered daily. Wines. House-ware. Confectionery. Newspapers and Magazines.  
**Muriel's Home-made Pickles. Dr. John Dog Food.**

Delivery Service now available throughout the Local Villages

**HOURS:-** Mon-SAT. 7am-6pm. Sun 8am-4pm  
01707 878731

**Oakes Restoration**

*Repairs to Fine Antiques  
And Contemporary Furniture  
French Polishing, Spray Finishing,  
Cabinet Making and Design, Veneering, Boulle Work,  
Leather Lining, Marquetry, Re-upholstering,  
Caning and Rushwork, Carving and Turning,  
Clock Restoration, Clock Servicing,  
Repairs to Metal Artefacts, Quality Fabric Sales.*

*All work guaranteed to the  
highest standards. Established 1991.*

David Oakes  
01992 511251 / 07860 954977

# St Elizabeth's

Corporate & Community  
Volunteering 2022

We have volunteering opportunities  
Gardening Projects for groups large and small  
on Wednesdays In July - October!

Why not use volunteering at  
St Elizabeth's as a great team building day  
whilst helping a local charity?

We now offer meeting room  
facilities with an afternoon  
volunteering - please contact us for prices.

For more information please contact the team on  
[fundraising@stelizabeths.org.uk](mailto:fundraising@stelizabeths.org.uk)  
or 01279 844355  
St Elizabeth's Centre, Much Hadham, SG10 6EW



[www.stelizabeths.org.uk](http://www.stelizabeths.org.uk)  
REg. Charity No: 1176777

*Positive living and learning for people  
with epilepsy and other complex needs*



Please mention HHW Parish Magazine when responding to an advert.

## I & B ELECTRICAL

Domestic & Commercial  
Electrician

- Rewires
- Fuse Boxes
- Security
- Extra Sockets
- Lighting Points
- Smoke Detectors
- Electric Cookers
- TV Points
- Phone Points
- Ring video doorbells
- Tidy & Efficient



**30 YEARS EXPERIENCE**

**Tel: 01707 262771**  
**Mobile: 07861 398288**

Family run business

[info@ib-electrical.co.uk](mailto:info@ib-electrical.co.uk)  
[www.ib-electrical.co.uk](http://www.ib-electrical.co.uk)



Please mention HHW Parish Magazine when responding to an advert.

## JAMES ROBINSON

- PLANT HIRE
- GROUNDWORKS
- PAVING
- DRIVEWAYS
- LANDSCAPING
- SEPTIC TANK INSTALLATION
- SITE CLEARANCE AND PREPARATION
- DEMOLITION

PLEASE CALL TO DISCUSS YOUR NEEDS

**07860 445203**

admin@j-robinson.co.uk  
www.j-robinson.co.uk



## Become-Balanced

Locally-based complete wellbeing services including:

### Hypnotherapy, Reiki & Life Coaching.

For

Fears/Phobias/Confidence  
Stop Smoking/Weight Control  
Life & Career Advice/Progression  
Self-Worth/Pain Management/  
Meditation/Relaxation/Relationships/  
Guidance/Positive Change  
**Free & no obligation initial  
consultation.**

Services available online, at home or  
Hatfield/Essendon base.

**For more information, testimonials**

*www.become-balanced.com*

**01707 434934, 07999 753474**

Darren Willbourne



Internal decorating only

## Steve Gibson

Painter and Decorator

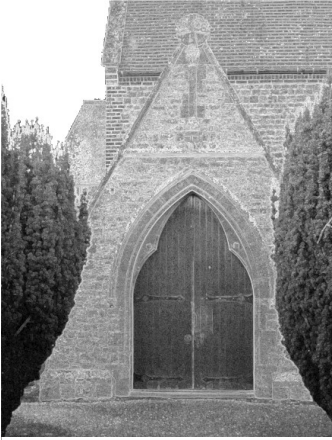
Home: 01707 875285

Mobile : 07733428447

Fully insured  
References available



Stevegibson2013@gmail.com



# Bayford

## St. Mary's Church

Bayford Church will be open Mondays, Wednesdays, Fridays and Weekends (weather permitting). JM

### **Church cleaning.**

### **BAYFORD PARISH COUNCIL.**

To read the accounts, minutes and agendas just Google 'Bayford Parish Council' and follow the link to 'Minutes'.

#### **Accounts**

The audited accounts are also available on the web site.

Our thanks to David Sitwell for acting as our auditor for yet another year and Maggie our clerk for keeping such excellent records throughout the year.

#### **Terry and Iris Whyman.**

We are all saddened by the passing of two members of this Bayford family so close together. Iris and Ken lived for many years in Broad Green, and

likewise, Terry, their son, lived with Maureen on Ashendene Road.

Our thoughts are with Maureen, Kelly and Stephen at this time.

#### **Meetings.**

##### **The next meeting:**

19<sup>th</sup> September.

Please see the web site for information and minutes.

Michael Wainwright (Dr),  
Chairman.

**[pc@begesford.co.uk](mailto:pc@begesford.co.uk)**

01707 875970.

Please check the web site

[www.begesford.co.uk](http://www.begesford.co.uk)

Bayford

## The Baker Arms.

Both Beverley and I would like to thank the residents of Bayford and surrounding areas for the wonderful support we received during the **Queens Platinum Celebrations**.

*Long may that spirit continue.*

**Quiz Nights** resume third Thursday of the at 7:30 pm.

Please watch the boards for details.



Looking forward to seeing you all soon.

**Martin & Beverley, 01992 511235**

## Knitting and Crocheting Group

Bayford's knitters and crocheters continue to meet on the first and third Wednesdays of the month at 8pm in the Baker Arms. We will continue to meet in August. We are currently knitting squares to make into blankets to send to Ukraine. All are welcome. For more information please call Caroline Fletcher on 07919 317212



## Save the date - Sunday 4<sup>th</sup> September

Coming together for the village picnic was an absolute highlight of the Jubilee weekend. Thank you to everyone who contributed in so many ways. It was great to reconnect with old friends (and make some new ones) and many people said that it would be good to get together more often. To build on the success of the picnic there will therefore be

a get together in the **Memorial Hall on Sunday 4<sup>th</sup> September**. Do come along for tea, cake, chat and to share ideas **between 2.30pm and 5pm**. If you have any ideas for future social events for the village and/or you would like to get involved on the 4<sup>th</sup> (whether baking, helping serve tea or putting out chairs etc), please get in touch. Also, if you would like to come on the 4<sup>th</sup> but need help getting to the hall, please let us know.

Sara Walduck (07710 381550), Lorna Fitzjohn (07582 538996), Jennifer Henderson (07400 414466), Jane Honeyman (07801 104679) or Caroline Fletcher (07919 317212)



## Kind Hands Dog Training



Positive, Kind,  
Professional,  
Force Free,  
Experienced Dog Training.

Have you got training issues  
with your dog at home OR  
when you are out and about?

Do you have a new puppy and need  
some help or guidance?

**1-2-1 training, tailored to your  
specific needs.**

No need to travel - I can come to you.

My passion is to build a better  
relationship with you and your dog.

**A trained dog is a happy one!**

Please contact **Jenny Fitzgerald** on:

**07812 598110**

Email [kindhandsdt@gmail.com](mailto:kindhandsdt@gmail.com)

**IMDT trained and fully Insured.**



PHONE 07850 334003

**TERRY TOLFTS**

**MOTOR VEHICLE TECHNICIAN**

**MOBILE SERVICING & REPAIRS TO MOST CARS  
& LIGHT COMMERCIAL VEHICLES**

Fully insured against accident and damage

## Herts Computer Services

Call Iain on **07787 157 937** or email:

[iain@hertscomputerservices.com](mailto:iain@hertscomputerservices.com)

**Home or small business IT support**

PC health checks & virus removal  
Broadband internet issues  
Data recovery  
Laptop repairs such as screen replacement  
PC hardware repairs & installations  
Wireless networking  
Website & internet address setup  
Microsoft server installations & small  
business support

**Microsoft & Comptia Certified  
Microsoft Small Business Specialist**

## Top-To-Toe Cleaners

For a really good clean by people you  
can trust. We'll leave your bathroom  
sparkling and your furniture shining.

We already clean homes in your  
neighbourhood.

**References provided.**

**Tel Kathy: 01992 462644**

**Mob: 07930 482646**

**Email:**

***kathythecleaner@hotmail.com***



# MITCH PLASTERING & DECORATING

Professional, Reliable,  
Quality  
and  
Clean Service

Over 20yrs experience,  
Fully Insured

Please Call Chris on 07775  
673423



## Apple Day

**24th September 2022**  
**From 11am - 4pm**

Join us for

**Apple Picking**



**Live Music**



**Craft Stalls**



**Organic Food**

St Elizabeth's Centre, South End,  
Much Hadham, SG10 6EW

Reg. Charity No: 1176777

[www.stelizabeths.org.uk](http://www.stelizabeths.org.uk)



## GARDENING

### Do You:

- NEED a strong pair of hands for those gardening jobs
- NEED your vegetable garden dug.
- NEED your grass/hedges cut
- NEED logs moving/splitting
- NEED stables mucked out
- NEED terraces or garden furniture pressure washed.
- NEED shed or fences painted.



### Then I am your man!

Time to suit, 7 days a week.

Please ring Paul Curson **01707 875622**, £10 per hour  
(£12 if using own machinery)

Transport required

I do not use mains electrical hedge cutters or mowers.



# Brickendon

## Chapel of the Holy Cross & St. Alban

Sunday 7<sup>th</sup> August – 10.15am Group Communion at Essendon  
Sunday 14<sup>th</sup> August – 10.15am Group Communion at Bayford  
Sunday 21<sup>st</sup> August – 10.15am Group Communion at Ponsbourne  
Sunday 28<sup>th</sup> August – 10.15am Group Communion at Little Berkhamsted  
Sunday 4<sup>th</sup> September – Parish Communion at Brickendon at 11.00am

**You are welcome to stay for a chat and coffee/tea after the services**

For enquiries about the Chapel please contact Richard Haryott 01992 511575  
d.haryott@gmail.com

### Flowers

Brenda Lambie  
Brenda Lambie  
Heather Ross  
Heather Ross

### August

5<sup>th</sup>  
12<sup>th</sup>  
19<sup>th</sup>  
26<sup>th</sup>

### Cleaning

Janie Corbisiero  
Virginia Haryott

### Brickendon Clubs:

We have some excellent clubs in Brickendon which are always happy to welcome new members.

**Book Club** - meets every first Tuesday of the month at 8pm, contact **Andrea Trendler for venue - 01992 511588**

**Pilates** - Every Tuesday morning in Fanshaws Room (the village hall) at 9.15am, to register contact **Harriet Barton, 07944 500504 or pilateswithharriet@hotmail.com**

### Fanshaws Room (the Village Hall)

The Village Hall in Brickendon is a lovely space for meetings and other gatherings. More details and photos can be found on the village website [www.brickendon-liberty.org.uk](http://www.brickendon-liberty.org.uk)

Hire charge for non-residents is £10 per hour.

Phone 01992 511551 for further information or to make a booking.

## Tennis Courts.

The fee for hire is still £5 per court per hour for everyone. Last summer the courts and pavilion were renovated and are in excellent condition.

For further information and to book see Brickendon website ([www.brickendon-liberty.org.uk](http://www.brickendon-liberty.org.uk))  
Brenda Lambie



## Parish Council

### Meetings 2022

Meetings are normally held in the Fanshaws Room at 7.30pm and all parishioners are welcome to attend and to raise any issues of concern. Agendas are posted on noticeboards at least 3 days before the meeting.

Parish Clerk: Laura Brooks-Payne  
Brickendon Liberty Parish Council  
PO BOX 81, Knebworth, SG3 6YZ

Email [clerk@brickendon-liberty.org.uk](mailto:clerk@brickendon-liberty.org.uk)  
Mobile 07803 906291

**Minutes:** Brickendon website  
[www.brickendon-liberty.org.uk](http://www.brickendon-liberty.org.uk) for .

**Meetings:**  
are on 28<sup>th</sup> July, 29<sup>th</sup> September and  
24<sup>th</sup> November

## Brickendon Petanque Boules Club

Play at The Farmer's Boy

### Summer Play Time

Tuesday 5.30pm - 7pm  
Thursday 10am - 12 noon  
Sunday 9.30am - 12 noon

Further information and enquiries  
contact Janet **01992 511515**



## BRICKENDON VILLAGE FETE

*Sunday 4<sup>th</sup> September  
11.30am - 3.30pm*

*A great event for the whole  
family  
Punch & Judy - Dog Show -  
Music - Games*

*Quality Craft Stalls -  
Refreshments - and much  
more!!  
Come and join in the fun*

Please mention HHW Parish Magazine when responding to an advert.



**achievephysio**  
relieve • restore • improve

**Ian J Johnston**

BSc(Hons) MCSP MAACP  
Chartered Physiotherapist HCPC Registered

## PHYSIOTHERAPY

In Brookmans Park

Clinic, home or work place

Tel: **07702 871780**

[www.achievephysio.co.uk](http://www.achievephysio.co.uk)

[info@achievephysio.co.uk](mailto:info@achievephysio.co.uk)



**JW**

BESPOKE  
ARCHITECTURE  
AND  
INTERIOR  
DESIGN

Tel: 01707 538038  
Email: [contact@jwbespoke.co.uk](mailto:contact@jwbespoke.co.uk)  
Visit: [www.jwbespoke.co.uk](http://www.jwbespoke.co.uk)

Award-winning architecture practice specialising in residential design. Local, friendly and knowledgeable. Helping you with your project through from concept design to the construction phase. Get in touch for a free consultation.

# P.W. Electronics

For supply and installation of your new digital equipment  
Repair of T.V. Video recording equipment, DVD and Hi Fi.

Sales Service & Rental

**Paul Wombwell**

**01707 265546 (Essendon)**

email [pwelectronics@btinternet.com](mailto:pwelectronics@btinternet.com)



## Dog Lovers Wanted!

Would you like the company of a dog, but can't commit to full time ownership? If you're at home during the day, have a secure garden, and no dog of your own (or one friendly dog), you could join us as a carer and earn some additional income, looking after dogs in your home while their owners are away. Previous experience of dog ownership required.

For more information, call Kevin on 01438 798484, visit [www.waggingtailsuk.co.uk/al/carers](http://www.waggingtailsuk.co.uk/al/carers) or email [al@waggingtailsuk.co.uk](mailto:al@waggingtailsuk.co.uk)

## BK Marquee Hire

For all your special events.  
Free quotations and site visit.



Table and chair hire.  
Catering, BBQs  
Hog Roast  
Staging and Dance Floor.

**01707 271054**

Mobile: 0796 0842998

e-mail: [bkmarqueehire@gmail.com](mailto:bkmarqueehire@gmail.com)

Web site: [bkmarqueehire.co.uk](http://bkmarqueehire.co.uk)

[facebook.com/bkmarqueehire](https://www.facebook.com/bkmarqueehire).

## Welwyn Garden City Male Voice Choir

Gentlemen, did you know  
singing is good for your  
health!

We are looking for singers.  
No need to be able to read  
music.

Please contact Bob  
07940565379

or come along to  
The Methodist Church,  
Woodhall, Welwyn Garden  
City  
on Thursday nights at 7.30 to  
either listen or join in

Essendon

# Essendon, Woodhill, Wild Hill & Woodside

St. Mary the Virgin



Flower Arrangers:

7<sup>th</sup> and 13<sup>th</sup> Pauline Alleyne

20<sup>th</sup> and 27<sup>th</sup> Judy Rennie

**Family Service.**

3<sup>rd</sup> Sunday of every month at 9.30.

## Tennis Courts

It has been good to see so many members playing tennis on the court now it is open again and we always welcome new members.

To join the club or any questions please contact,

**Nicki Whitelaw 07946300512**

***nicki.whitelaw@sky.com***

Essendon Tennis Club Committee

## The Village Hall.

For clubs, remember to check with your governing body for any specific COVID related requirements.

Tel: 07442 499601

email:

*essendonvillagehall@hotmail.com*

*facebook.com/essendonvillagehall*

*essendonvillagehall.wixsite.com/*

*essendonvillagehall*

## Essendon Connect Coffee Mornings:

We will be providing a snack lunch FREE every Tuesday in the village hall for a six week period over the summer holidays for Essendon residents.



Starting Tuesday 26<sup>th</sup> July, we will offer a ploughman's lunch or soup and a roll with fruit and a drink. From 12 noon until 2pm Essendon Village Hall - all welcome.

## All Sorts Dementia Group.

Social and activity group for people with mild to moderate dementia starting at Essendon Village Hall every Wednesday 10.30am till 3pm.

Spaces limited so please call

**01279 498938** or

email *allsortsdg@gmail.com*

for more information.

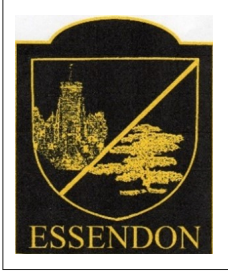
Website: *www.allsortsdg.co.uk*



**All Sorts**

Dementia Group

## ESSENDON PARISH COUNCIL



The next meeting of the Essendon Parish Council will be held on 12<sup>th</sup> September, there being no meeting in August.

Agendas will be available on the PC website, (<https://www.essendonpc.org.uk/>) and on noticeboards in the village. Minutes of all meetings are also available on the website.

Members of the public are welcome to attend all meetings.

### FLOWER ROTA

After many years of successful flower arranging, we have suddenly found ourselves short of members.

Are there any new candidates who would be prepared to do one period of two weeks? As the church is cool the flowers can last two weeks if watered regularly. We do not ask for anything more than you would do in your own home and no more than two arrangements. We can organize someone to help if you do not wish to do it on your own.

Do please ring me – 01707 658322 or e mail [judyrennie135@btinternet.com](mailto:judyrennie135@btinternet.com)

Judy Rennie



## Chess



at The Woodman.

**Tuesday evening, 7:30pm to 9:30pm**

We play in a couple of back rooms at the pub (with thanks to The Woodman) and, when the weather is right, are keen to play on the tables in the pub garden. Same weeks as school term.

- ◆ No fee,
- ◆ Bring your own set or use one provided,
- ◆ Learn basics, discuss strategies
- ◆ Total beginners
- ◆ Used to play and want to try again
- ◆ Competitive or relaxed
- ◆ Drop in from time-to-time

Hope to see you there.



### Scouts THE 1<sup>st</sup> NORTHAW Scouts SCOUT GROUP



Both our **Beaver Colony** (6-8 years) and **Cub Pack** (8-11 years) have resumed “normal” activities including hiking, camping and learning new skills and having great fun.

The numbers in both Sections are growing and we would love to welcome new members. We would also be really happy to have more adult helpers and leaders to support this. Beavers meet on Thursday and Cubs on Monday.

Meetings are based at our Headquarters in Northaw Village.

To find out more contact Gordon Marshall at

[gordon.marshall@pbscouts.org.uk](mailto:gordon.marshall@pbscouts.org.uk)

## Essendon Nature Notes

Listening to song is often the best way to identify birds but for a couple of our migrant visitors it is just about the only way. I heard a chiffchaff and a willow warbler singing at the same time on recent summer evening walk in Essendon and for these two songsters their visual similarity is as surprising as their difference in voice.

In appearance both are small yellow-green warblers with little to choose between them except maybe the willow warbler is slightly slimmer and the chiffchaff has darker legs but that's about it and you would be hard pushed to make those distinctions in the field. However when they sing there is no mistake. The onomatopoeic chiffchaff's call is a sweet two-note, up down proclamation which is as loud as it is memorable, whereas the willow warbler is a complete contrast with its gorgeous and subtle cascading diminuendo. The chiffchaff always

feels like the song of spring and the willow warbler the music of summer but hearing them in communion is a particular delight.

In times past it would have been the willow warbler which you were most likely to come across but of late it is the chiffchaff which has been more abundant. Around Essendon there are few places where you can't hear the chiff and the chaff of its song, and indeed one woke me this morning, but I don't think there are more than a couple of pairs locally of its doppelgänger.

Another way of determining which is that the chiffchaff can now be seen in small numbers overwintering, and this might be the key to its relative success. Perhaps we can use those unseasonal sightings to sharpen our identification skills, separate them by eye and next spring really impress our walking companions.

DC

## Essendon Women's Institute. June

Fifteen members and five guests attended the June meeting on a very warm evening and enjoyed a talk on the Making of Handwoven Bags from the Philippines presented by Analiza Jones. The delightful Analiza gave an amusing insight into her childhood home on one of the many Philippines' islands. With photographic slides Analiza described the process of making fancy goods and handbags using fibres from the Abaca plant, a relative of the banana tree family

native to the Philippines. It is also called Manila hemp, though it is not related to actual hemp. The stalks and stems are stripped, pounded, dyed and then woven. A wide range of the finished products were available for sale and proved to be extremely popular. The evening concluded with tea, biscuits and delicious cakes baked by our Maureen McCann.

Essendon WI meets on the third Wednesday of each month in the Village Hall at 7.30 for 8.00 p.m. Visitors are always very welcome.

**theWI**  
INSPIRING WOMEN



## Cricket fixtures in Essendon.

| SATURDAY |                    |       |      | SUNDAY  |                  |       |      |
|----------|--------------------|-------|------|---------|------------------|-------|------|
| Date     | Team               | Venue | Time | Date    | Team             | Venue | Time |
| Aug. 6   | Sawbridgeworth III | Home  | 1.00 | Aug. 7  | Epping CC        | Home  | 2.00 |
| 13       | Ardeley Walkern    | Away  | 1.00 | 14      | Chinar CC        | Home  | 2.00 |
| 20       | Stansted H & E II  | Home  | 1.00 | 21      | New Calypsonians | Home  | 2.00 |
| 27       | Cloghams           | Away  | 1.00 | 28      | TBA              |       |      |
|          |                    |       |      | Sept. 4 | New Ham          | Home  | 1.30 |
|          |                    |       |      | 11      | Carpenters Arms  | Home  | 1.30 |
|          |                    |       |      | 18      | Rosslyn          | Home  | 1.30 |

### Gardening in August

I am sitting here writing this with the sun beating down and wondering what will have happened to us all when it finally appears in print! A first concern today is how to cope with immediate watering problems and hope that you have found sensible ways of sorting this out. An alternative is that things have changed so much that we are now 'under water' as you read this but I hope not! August often gets a bad press with the excitement of the earlier summer being taken over by all sorts of apparent problems - do not despair if the garden looks a bit tired and careworn as August is a time made for bold colours. We hope that the annuals are at their best and soaking up the sunshine and do not worry too much about the state of the lawn - just keep it tidy and they do recover!

Dahlia growers will be admiring their results and particularly if you have some new ones. Make sure they are firmly staked and remove dead flowers to encourage a longer season. Looking ahead to next summer, there are some wonderful Sunflowers about, they are easily grown from seed outside as annuals so be ready to sow them outdoors next Spring and the big seed companies have considerable varieties.

We all accumulate all sorts of things we think we will use again so dispose carefully of some of this. Also make a mental note of things that need cutting back or even removing in the months ahead.

I have been fascinated by the variety of different grasses, of different shades of greens and browns and different heights which can very much alter our vision even in quite a small area.

We are rightly being encouraged to grow more of our own vegetables and need to work out when they are best watered and there is no doubt that watering in the evening has much more benefit. It is also much better to give a real good soak every few days rather than daily and to water the soil not the plant! I wonder what will lie ahead of us all in September!      Germander Speedwell

**ROY FRITH  
VACUUM CLEANER  
SALES,  
SPARES & REPAIRS**

RECONDITIONED APPLIANCES

01992 503991

13 TALBOT  
STREET  
HERTFORD  
SG13 7BX



**Essendon Services for  
families of all ages.**

**3<sup>rd</sup> Sunday of every month at 9.30.**

(some details are still to be agreed so  
this calendar will be updated  
regularly)

**Everyone is welcome!**

**September** – Harvest – A time to give thanks and think of others. Farming families most welcome.

**October** – Teddies: How many can we collect this time for children in Syria who have lost theirs?

**November** – Remembrance. Thinking about those who gave their lives for us so we can live in freedom.

**December** – Christingle. Remind me, what's the orange for? Oh yes, the Children's Society.

**Christmas Day** – The big day is here. Jesus's Birthday. So did you get any presents?

**The Lord Burghley 500 Foundation**

In early Spring the Churchwardens at Essendon received an invitation to apply for tickets to attend a Service of Thanksgiving to celebrate the birth and lasting legacy of The Right Honourable William Cecil, Lord Burghley KG. This was to be held at Westminster Abbey on 22<sup>nd</sup> June 2022.

Unfortunately, when the day arrived, travel was rather difficult due to the transport strike but we duly set off very early to drive down to Westminster Abbey. The journey down was very slow (an average of 8MPH) but we made it just in time.

The service was attended by Her Royal Highness Princess Alexandra, Lord Salisbury, other members of his family and also many other dignitaries.

Proceedings were conducted by Dr David Hoyle MBE, Dean of Westminster; we were given an in depth tribute by Dr David Starkey who included many interesting facts about the life of Lord Burghley, lessons were read by members of the Salisbury family and the Choir of Westminster sounded amazing.

After the service we emerged into the bright sunlight to be greeted by the magnificent sound of the ten bells of the Abbey.

A truly memorable day.

# Ron Skinner

Co Director

**01707 655 511 07747 841 103**

sales@evergreenlandscapes.co.uk



## Evergreen Landscapes & Building Services Limited

Rydal Mount Yard, Baker Street, Potters Bar, Herts EN6 2BS

*Driveway & patio installers and Landscapers*

www.evergreenlandscapes.co.uk

## short courses & workshops **ARTY-FACTS**

with artist and tutor Christine Spence  
Join short courses/workshops at her studio, or  
the Village Hall in Essendon, Hertfordshire.

DRAWING AND PAINTING

MATERIALS AND TECHNIQUES

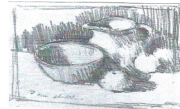
TONE, COLOUR & COMPOSITION

LANDSCAPE, STILL LIFE, FLOWERS & FIGURE  
and much more!

*Suitable for all levels of experience!*



flinstablestudio@gmail.com www.christinespence.co.uk  
07792 130646



### ENROL NOW !

*secure your place with a 25% deposit*

REGULAR WEEKLY

## ART COURSE

ESSENDON VILLAGE HALL  
TUESDAY MORNINGS  
10AM - 2PM

27th September 4th/11th/18th October  
COST £120

8th /15th/22nd/29th November  
COST £120

NEW - INTRODUCTORY  
ART CLASSES

FLINT STABLE STUDIO  
SATURDAY MORNINGS  
(MAXIMUM OF 6 STUDENTS)  
10AM - 12.30

COST £18  
Material Included

CONTACT CHRISTINE SPENCE  
www.christinespence.co.uk  
email: flinstablestudio@gmail.com

# Little Berkhamsted, Howe Green & Epping Green

St. Andrew



**Church Cleaning.**

Chris and Tricia Hare

## Baby Group

**Every Tuesday 10 - 11.30am  
St Andrew's Church,**

Very casual so feel free to pop in and say hello!

All babies and toddlers welcome with parents, grandparents and carers.



**WELL-BEING CLASS  
IN THE COMMUNITY**

Every Tuesday  
at St Andrews Church  
11.45am – 12.30pm

Come along & learn exercises to  
keep you strong

Stretches to relieve aches & pains

Relaxation & breathing techniques  
to release tension & anxiety

THE CLASS IS FREE &  
EVERYONE IS WELCOME!

## News from Little Berkhamsted Parish Council

The next meeting of the Parish Council is on Wednesday 21<sup>st</sup> September 2022 at 7.30pm in the village hall. The agenda is published on the website and village noticeboard the week before the meeting and residents are welcome to send questions and comments to the clerk beforehand, [clerk@littleberkhamsted.org.uk](mailto:clerk@littleberkhamsted.org.uk) or attend the meeting and ask in person.

**The Village Beacon**, which was commissioned by the PC to celebrate the Queen's Platinum Jubilee, can now be found in its permanent location in the centre of the village opposite the Village Hall. For safety reasons, it will be moved to the field when it is going to be lit. Full reports of and photographs from the various events held over the Platinum Jubilee weekend can be found at <http://www.littleberkhamsted.org.uk/events.php>

At the moment the village doesn't have a **Recreation Committee** devoted to planning and organising social events.

If you would like to see future social events and/or fundraisers happening in the village - such as concerts, quiz nights, the village fete, bonfire night etc. please get in touch and we will help you to put together an organising committee.

The PC also has some money in its account that is earmarked for funding social events.

### **Table Tennis**

Look out for the new outdoor table tennis table going up soon outside the pavilion and available for all to use. Bats and balls will be provided but, if

these go missing, please bring your own.

Please contact Solomon if you are interested in coaching on 07453 614912

Email: [smusiwacho@yahoo.co.uk](mailto:smusiwacho@yahoo.co.uk)

### **Friday Community Café**

Every week from 10 -12 at the Cricket and Community Pavilion. Everyone welcome to come along and enjoy a cuppa and home baked goodies.

### **Little Berkhamsted Sahibs Cricket Club**

Invites everyone to come along and watch their games and enjoy a drink from the bar. Matches every Saturday afternoon and alternate Sundays. (Fixtures list on the noticeboard at the gate).

### **New YOGA Classes starting in the Village Hall**

Suitable for all abilities

Monday evenings 7.45 – 9.00pm

Wednesday mornings 10.15 – 11.15am

Sunday mornings 10.15 - 11.15am

For further information contact

**Beverly on 07989 181847** Email:

[beverly@glamazon-lifestyle.co.uk](mailto:beverly@glamazon-lifestyle.co.uk)

## Little Berkhamsted Community Facilities for Hire

The following facilities are available for hire -  
**Village Hall and Cricket and Community Pavilion**



The Village Hall has disabled access and toilet, a fully equipped kitchen for any refreshment needs and projector equipment.



**The cricket and community pavilion** has a fully equipped kitchen, bar area, changing rooms and shower facilities.

Hire Charges (per hour): Little Berkhamsted Resident: **£12** Other: **£17**

For further details contact: Sandie Ash 01707 87522  
or [clerk@littleberkhamsted.org.uk](mailto:clerk@littleberkhamsted.org.uk)



## Master Art Workshops are back in Little Berkhamsted.

The workshops return to Little Berkhamsted Village Hall starting in September and feature renowned and inspirational artists brought to our lovely rural location.



The workshops are full days 10 - 4pm  
with tea/coffee  
and a 2 course lunch included.

**The launch is on 13<sup>th</sup> August 2022 at St Andrews Church 2—4pm.**

Meet Sue and Judith who are running the workshops and will tell you about the autumn programme for 2022 over a complimentary cup of tea and cake.

For more information contact **Sue on 07973977192** or

**Judith on 01992 579199**

***Suewilliams021@aol.com***

<https://m.facebook.com/105966185509323/>

**P Foster Roofing**  
Hertford

All types of roof work undertaken  
**01992307940**

**07581200166**  
**Paulfosterr21@gmail.com**



# Newgate Street

## Ponsbourne St. Mary

Next

## Village Coffee Morning

Monday 1<sup>st</sup> August

10—12 noon in the **Church**

### VILLAGE HALL BOOKINGS

All bookings can now be made through the Village website

[www.newgatestreet.org/](http://www.newgatestreet.org/)

Follow the link to Hall Rental and Book the Hall .

### Book Exchange.

**A BIG THANK YOU** for the donation from the BOOK EXCHANGE which continues to run at the **Post Office** in Newgate Street Village Hall on Tuesday, Wednesday and Thursday mornings .



### What's On in Newgate Street

**Table Tennis:** Tuesday evenings 7.30 - 9.30pm in the Village Hall. £1 pay and play

**Tennis** - Tuesday mornings 9.30-10.30am Village Courts. Term time only. Contact 07710 507 215

**Book Swap** - Pre read books to buy £1 or swap 50p, in the Village Hall Post Office Tuesday & Thursday mornings.

**Village Chat** - WhatsApp group for people living in the village. To join the group contact 07710 507 215

**Village Pub Social** - 8pm the second Friday of every month in either The Crown or The Coach & Horses Pubs, come along to meet friends and make new ones. See Village Chat WhatsApp group or Village website for details.

#### Post Office.

A small Post Office is open on Tuesday and Thursday mornings in the village hall.



# THE CROWN

Newgate Street Village, Hertford, Herts, SG13 8RA 01707 872 107



## Traditional Home Cooked Locally Sourced Food

\*Regular Live Music

\*Breakfast Served Friday & Saturday 9-11.30am

\*Traditional Sunday Roast Dinners Served 12-6pm

\*Marquee for Hire, alongside Garden Area.

\*Amazing Buffet Options Available

(Birthdays, Wakes, Christenings, Baby Showers etc)

**\*20% Discount for Over 65's Monday - Wednesday (Food Only)**

Marriott & McKellar



## TREE SERVICES

Serving Herts, Beds, Essex and the South of England.

We provide a professional & reliable service in all aspects of Tree Surgery, including:

Reducing, Pruning, Thinning, Crown raising, Hedge Trimming, Topping, Pollarding, Felling and Stump grinding,

**Fully Insured and certified.**

Marriottandmckellar@gmail.com

Freddie: 07834 550 841

Ross: 07895 907 629

## Three Bears Mobile Vets

Independent, high quality, veterinary care based in Newgate Street Village.

We provide a home visit service but also have a fully equipped practice in Newgate Street.

Tel: **07477 873891**

Email: [threebearsvets@gmail.com](mailto:threebearsvets@gmail.com)

Website: [www.threebearsvets.co.uk](http://www.threebearsvets.co.uk)



## Professional carpet, rug & upholstery cleaning

Stain & odour removal  
Scotchguards  
Fully insured, Free quotes.



## Window, conservatory & UPVC cleaning

Tel: 01992 586004  
Mob: 07958 729074  
[www.dharrisccleaning.co.uk](http://www.dharrisccleaning.co.uk)

**Isabel** Hospice  
Together we care

There's never been a better time to be outside with friends and family. Why not hold an Isabel's Tea Party? Host your own virtual or outdoors tea party with your nearest and dearest, to support your local hospice.

Isabel Hospice relies heavily on donations from our community, as well as income from fundraising events and from our 18 shops. We forecast that our income from fundraising and shops will be £1.9m lower than our budget this year due to the coronavirus pandemic.

For more information, visit [www.isabelhospice.org.uk/teaparty](http://www.isabelhospice.org.uk/teaparty)

If you are fundraising for Isabel Hospice, please ensure you are following government covid-safe guidelines and adhere to social distancing.  
For a list of fundraising events, visit <https://www.isabelhospice.org.uk/>

Please mention HHW Parish Magazine when responding to an advert.

## MY LINCHPIN

SMALL BUSINESS ADMINISTRATION SUPPORT

My Linchpin understands the pressures of running a small business and are here to help with flexible cost effective support.

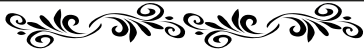
- Help with year end admin duties
- Preparation of VAT returns
- Invoice and debtor management
- General secretarial and admin support

Temporary Cover, Holiday Relief and Volume Overflow

Email: [mylinchpin@gmail.com](mailto:mylinchpin@gmail.com)

[www.linchpin.co.uk](http://www.linchpin.co.uk)

Telephone: 07948 503768



Interior

-J C-

Exterior

KEENAN

DECORATING SERVICES

All aspects undertaken  
: Excellent references of  
Character & workmanship

TELEPHONE: 01707 882927 home

07899 964 436 mobile

[john.keenan2@gmail.com](mailto:john.keenan2@gmail.com)



## Garden Machinery Repaired and Serviced

Lawn mowers, hedge trimmers, chain saws etc. I have been repairing garden machinery for many years. Nothing is too big or too small. I can collect if needed.

Please phone **Roger Moore** for further information. **07716239789**



Master Locksmiths and Security Engineers

## G J Locksmiths

9 The Broadway,  
Old Hatfield, AL9 5BG

Tel: 01707 515 510

Mob: 07774 866333

[www.gjlocksmithshatfield.co.uk](http://www.gjlocksmithshatfield.co.uk)  
[martin@g-j-locksmiths.co.uk](mailto:martin@g-j-locksmiths.co.uk)

Fast reliable service  
**FREE surveys** to insurance or  
police specification.  
phone **Martin Shadbolt**

Company member of the Master Locksmiths  
Association



**ANTIQUES RESTORATION  
AND MODERN**

**40 years experience**

**All Repairs, Polishing, Fully Insured, Free Estimates**

**Peter Worby Tel: 01920 821973**

**NO VAT.**



**BROWNIES, CUBS, BEAVERS AND SCOUTS**

Beaver Colony - Thursday 5.30pm - 6.45pm

Cub Pack - Thursday 7.00pm - 8.30pm

Scout Troop - Monday 8.00pm—9:30pm

1st Birch Green Brownies - Monday 6.30pm - 7.45pm

Meetings are held at

Cowper Hall, Hertingfordbury Cowper Junior School, Birch Green, SG14 2LR

Website: [www.1stlettygreen.org.uk](http://www.1stlettygreen.org.uk)

**C.J.A UPHOLSTERY**

- New Designs To Your Own Specification
  - Made To Measure Furniture
  - Home Visits - Portfolio Available
  - Have Your Old Furniture Re-Upholstered
- Northam • 45 North Street  
Nazeing • EN9 2NH

Guaranteed Quality

Workmanship

1000s of Fabrics

28 Years Experience at

**Omega Furniture**

[www.cjaupholstery.co.uk](http://www.cjaupholstery.co.uk)

T: 01992 893 964

M: 07904 359 333



**Heating / Plumbing**

**Heating installation & repairs.**

**General plumbing.**

Boilers installed & serviced.

**Oil boiler specialist.**

24hr emergency service.

Bathrooms/Showers fitted.

All Work Guaranteed

Phone: 07956 369588

[sjheatingplumbing@hotmail.co.uk](mailto:sjheatingplumbing@hotmail.co.uk)

**AYERS  
FURNITURE  
SERVICES**

*Furniture Repairs Undertaken*

- GLUE CHAIRS & TABLES
- SETTEE & CHAIR SEAT SPRINGS REPLACED
- RESTORE SECOND HAND & ANTIQUE FURNITURE
- HEAT MARKS REMOVED
- POLISHING & LEATHER RESTORATION

*Please contact Barry Ayers on*

t:01707 261317

m:07768 848604

## Diamond Pest Control



**Diamond Pest Control** have a solution to any pest problems you may be encountering.

If you need a **wasp nest** removed or are experiencing issues with **rodents, moths, cockroaches, pigeons** or any other pests you can contact us on the number below.

**We are recruiting** for new technicians to join our team. Call us or send us your CV if you are interested!

**0208 889 1036**

info@diamondpestcontrol.co.uk

www.diamondpestcontrol.co.uk

## BigBlackHen.com

The beautifully simple way to sell your home.

**Thinking of selling your home?**

I offer local expertise (I grew up in "Little B"), innovative marketing and personal "service" all for a low fixed fee

Call Nigel Adams on:

**01992 878580**



BigBlackHen.com

## JUST FEET Foot Health.

Nail cutting, Corns, Verrucas, Thickened Nails, Split Heels, Athlete's Foot, Warts, Hard Skin, Calluses

### Mobile Foot Health Professional

Deborah McLoughlin, MCFHP  
MAFHP

Tel: 07973 872967

e-mail:

d.a.mcloughlin@btopenworld.com

Please mention HHW Parish Magazine when responding to an advert.

# OAKLAND GARDENS

## L & M SWAIN GARDEN MAINTENANCE

ALL TYPES OF GARDEN WORK UNDERTAKEN  
INCLUDING  
REGULAR MAINTENANCE AND ONE OFF TIDY UPS

HEDGES CUTTING

TURF LAYING

FENCING

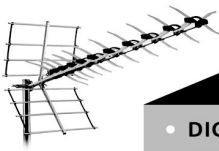


PRUNING

PRESSURE WASHING

PATIOS LAID

TELEPHONE: 01992 511343, 0794 1398 510



Freeview

sky HD

freesat



MEMBER

## HERTFORD TV SERVICE

Tel: 01992 552955 [www.hertfordtvservice.co.uk](http://www.hertfordtvservice.co.uk)

- DIGITAL FREEVIEW AERIAL INSTALLATIONS
- EXTRA TV POINTS and SKY PLAYBACK
- AERIAL REPAIRS and STORM DAMAGE
- DAB/FM AERIALS and COMMUNAL TV SYSTEMS
- FREESAT HD, SKY+HD and SKY Q
- HIDDEN DISH SPECIALISTS and FOREIGN SATELLITE
- PLASMA/LCD/LED TV, AUDIO and DVD REPAIRS
- TV WALL INSTALLATIONS and HIDDEN CABLES
- WIRELESS BURGLAR INTRUDER ALARM SYSTEMS
- CCTV SYSTEMS IN FULL HD – WATCH ON YOUR TABLET OR SMART PHONE ANYWHERE IN THE WORLD
- WIFI ACCESS POINTS and DATA NETWORK DISTRIBUTION
- SONOS and HOME CINEMA AUDIO SPECIALISTS
- VIDEO DOOR ENTRY and INTERCOM SYSTEMS

UNIT 1B, FOXHOLES AVENUE, HERTFORD SG13 7JG  
LOCAL FAMILY BUSINESS ESTABLISHED 1979 • ALL WORK FULLY GUARANTEED

Please mention HHW Parish Magazine when responding to an advert.



## NEED A WINDOW CLEANER?

*Dirty Windows?*

**Excellent standards guaranteed or your money back!  
Contact us direct for a list of services provided or visit  
our Website or Facebook Page:**



Will: 07737 375618

[gleamteamwindowcleaners@outlook.com](mailto:gleamteamwindowcleaners@outlook.com)

[www.gleamteamwindowcleaners.com](http://www.gleamteamwindowcleaners.com)

[@gleamteamwindowcleaners](https://www.facebook.com/gleamteamwindowcleaners)



### AMV CHIMNEY SWEEPS

Traditional Chimney Sweep  
with brushes,  
fireplace sealed and advance  
vacuum technology  
Used

Inglenooks, Wood burning stoves,  
Aga/solid fuel stoves.  
Gas fires, cowls fitted, smoke testing,  
certificates issued.  
Tel:07815 502798.

email  
[amvchimneysweeps@googlemail.com](mailto:amvchimneysweeps@googlemail.com)  
web [www.amvchimneysweeps.co.uk](http://www.amvchimneysweeps.co.uk)

Certified member of the Institute of Chimney  
Sweeps

## EDGE

### GARDENS

Your friendly local specialists for

- Fencing [new & repairs]
- Landscaping

To talk about your requirements, or for a  
free quote, call  
Andrew or Nikki today

07808 168 462  
0800 00 25 7 25

[www.edgegardens.co.uk](http://www.edgegardens.co.uk)

Please mention HHW Parish Magazine when responding to an advert.

# PRE-SCHOOL & FULL DAYCARE

appledaycare.co.uk



**apple**  
daycare Ltd

CHANGING FUTURES TODAY

appledaycare@mail.com

Tel: 01707 872 949

Hartford Hundred West Group of Parishes



Visit the Hartford Hundred web site at

[hartfordhundred.org.uk/](http://hartfordhundred.org.uk/)

for full details of telephone and Zoom services

**Village Halls.**

LITTLE BERKHAMSTED

01707 875221

(Facilities for the disabled)

NEWGATE STREET

01707 874388 + online

(Facilities for the disabled)

WILD HILL 01707 642632

BAYFORD 01992 511247

BRICKENDON 01992 511551

ESSENDON 07442 499601

(Facilities for the disabled)



Personal,  
caring and  
independent.

*The complete  
funeral service*

24 hour service  
•  
Private Chapels of Rest  
•  
Bespoke Funeral Plans  
•  
Own Crematorium

STEVENAGE • 01438 316623  
HITCHIN • 01462 438422  
KNEBORTH • 01438 812365  
BUNTINGFORD • 01763 274111  
WELWYN GARDEN CITY • 01707 390018  
WELWYN • 01438 714686  
HERTFORD • 01992 582052  
WARE • 01920 468551  
LETCHEWORTH • 01462 684292  
HODDESDON • 01920 471709  
HARWOOD PARK • 01438 812515

**AUSTIN'S**

FAMILY FUNERAL DIRECTORS

[www.austins.co.uk](http://www.austins.co.uk)

*Serving the local community for ten generations*



## Harwood Park

*The perfect setting to commemorate  
the life of your loved one*



Crematorium and memorial  
gardens created and managed by  
the Austin family in the beautiful  
Hertfordshire countryside.

[www.crematorium.co.uk](http://www.crematorium.co.uk)

## MAGAZINE TEAM

### ***Editorial and Advertising***

Michael Wainwright, 12 Church Road,  
Little Berkhamsted, Hertford. SG13 8LY  
email:- parishmag@begesford.co.uk

01707 875 970

Proof readers: Judy Rennie, Sue Wainwright,

### ***Graphics***

All photographs M E Wainwright. (unless credited)

### ***Treasurer***

Peter Chivers. 53 Wildhill, Essendon, AL9 6EA

01707 642 622

### ***General Distributors***

Sue and Mike Wainwright

01707 875 970

### ***Parish Distributors***

BAYFORD: Jane Honeyman, 22 Well Row, SG13 8PW

01992 511 391

BRICKENDON: John and Janet Rees, 8 Brickendon Green, SG13 8PB.

01992 511 515

ESSENDON: Shirley Christison, 24 Rectory Close, AL9 6HG,

01707 261 437

WILD HILL: Sue Horner, Butlers Mead, 3 Hornbeam Lane, AL9 6JF

07768 166 938

LITTLE BERKHAMSTED: Margery Bailey, The Tower House, Stockings Lane,  
SG13 8LW

01707 875 791

NEWGATE STREET: Angela Bryant, 29 Newgate Street Village, SG13 8RP

01707 874 805

Postal Distribution: Peter Chivers, 53 Wildhill, Essendon, AL9 6EA

01707 642 622

**Copy for the magazine, please by the  
12<sup>th</sup> of each month,  
or earlier if possible.**

**Please note this is the deadline for copy and not the target date.**

**Subscription rates: 60p per copy or £6 for a year.**

**Postal rates: 2<sup>nd</sup> class only £18.00**

*The Editor reserves the right to shorten or omit articles or refuse advertisements. The opinions expressed in this magazine are not necessarily those of Clergy, Editor or Publishers. The inclusion of advertisements in the magazine does not imply their endorsement by Clergy, Editor or Publishers.*



J.J.  
**BURGESS**  
& Sons

**Established 1839**

**INDEPENDENT  
FAMILY FUNERAL DIRECTORS**

*Established 1839*



*'Creating Memorials that stand as a  
lasting act of remembrance'*

**New Memorials, Letter Cutting, Levelling,  
Turving, Cleaning, Repairs,  
Grave Maintenance, Free Design &  
Estimates Given**

For a memorial of distinction, a brochure or a home visit call us on

**0800 174 220**  
**24 hours**

AlfredHouse  
20 The Common  
Hatfield  
Hertfordshire AL10 0ND

**01707 262 122**

James House  
5 Cole Green  
Welwyn Garden  
Hertfordshire AL7 3PP

**01707 391 808**



AH  
**NICHOLLS**  
& SONS LTD



## Hard Landscaping & Fencing Supplies



Fencing | Aggregates |  
Blocks & Kerbs | Porcelain  
Paving & Natural Indian  
Sandstone | Mixed Concrete  
| Grab Lorry Services.

01992 462035

Etteridge Farm Depot  
Pembroke Lane  
Broxbourne  
Hertfordshire  
EN10 7QP



Discover two very different golf courses situated in a picturesque 450-acre estate, which provides an idyllic backdrop for one of the most welcoming and progressive golf clubs in England.

## A MODERN CLUB IN A TRADITIONAL SETTING



ESSENDON  
COUNTRY CLUB

01707 260 360  
[www.essendoncc.co.uk](http://www.essendoncc.co.uk)